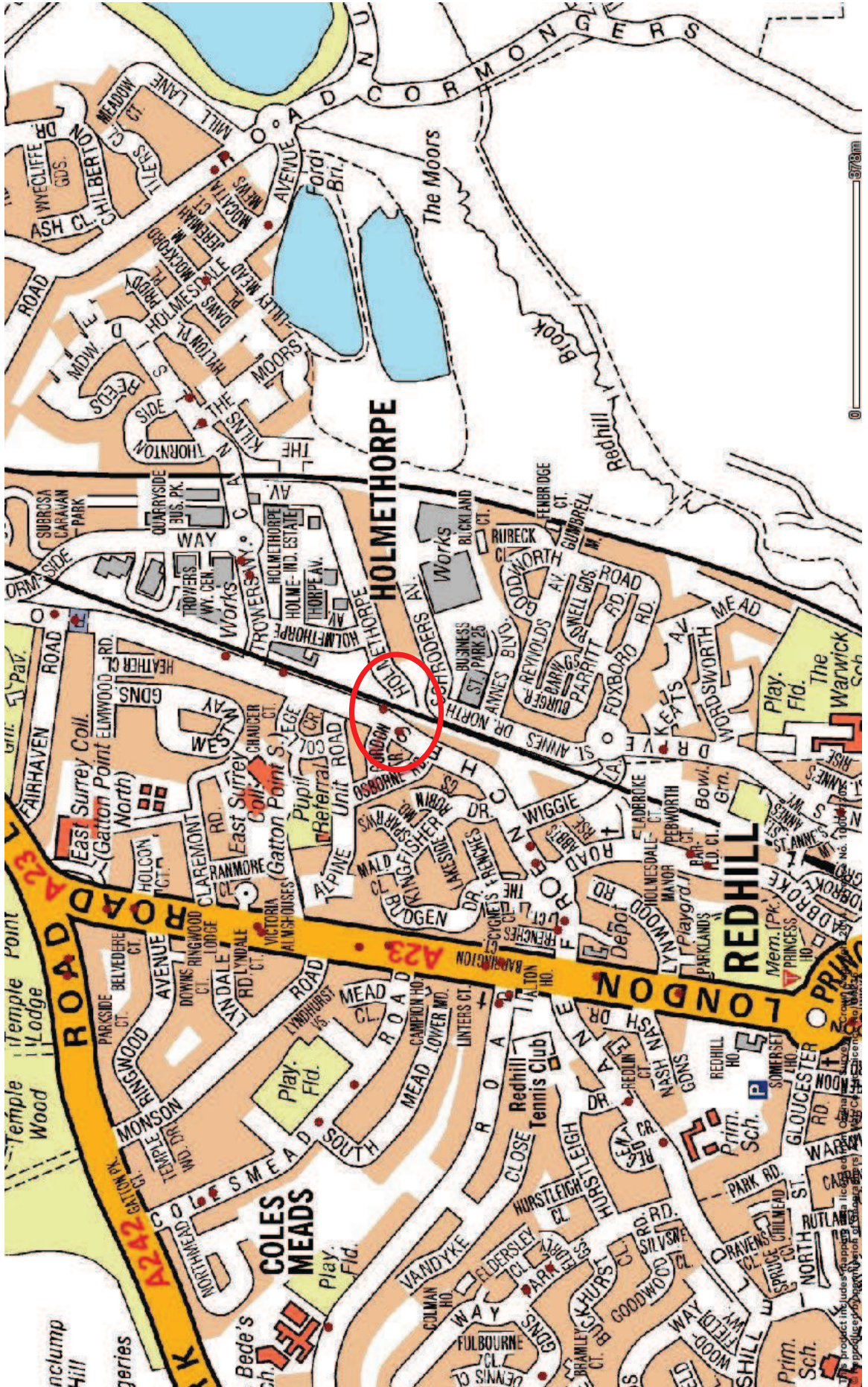


Frenches Rd j/w Gordon Rd, Redhill bus stop (northbound)

Current situation:

Although the bus stopping area (yellow-lined bus cage) is often left free, either side of the bus cage are parked cars which prevent bus passengers having step-free access onto/off the bus due to the bus having to stop in the road next to the parked cars, or only being able to pull into the stop at an angle just between any parked cars. The bus cage currently measures 13 metres, with the bus measuring just under 12 metres so that there is no space for manoeuvring into the stopping area to be parallel to the kerb for step-free access onto the bus. This not only is an issue with regards to accessibility, it also has repercussions on the reliability of buses as they are having to negotiate the parked cars rather than being able to easily pull in & out of the kerb at the bus stop.

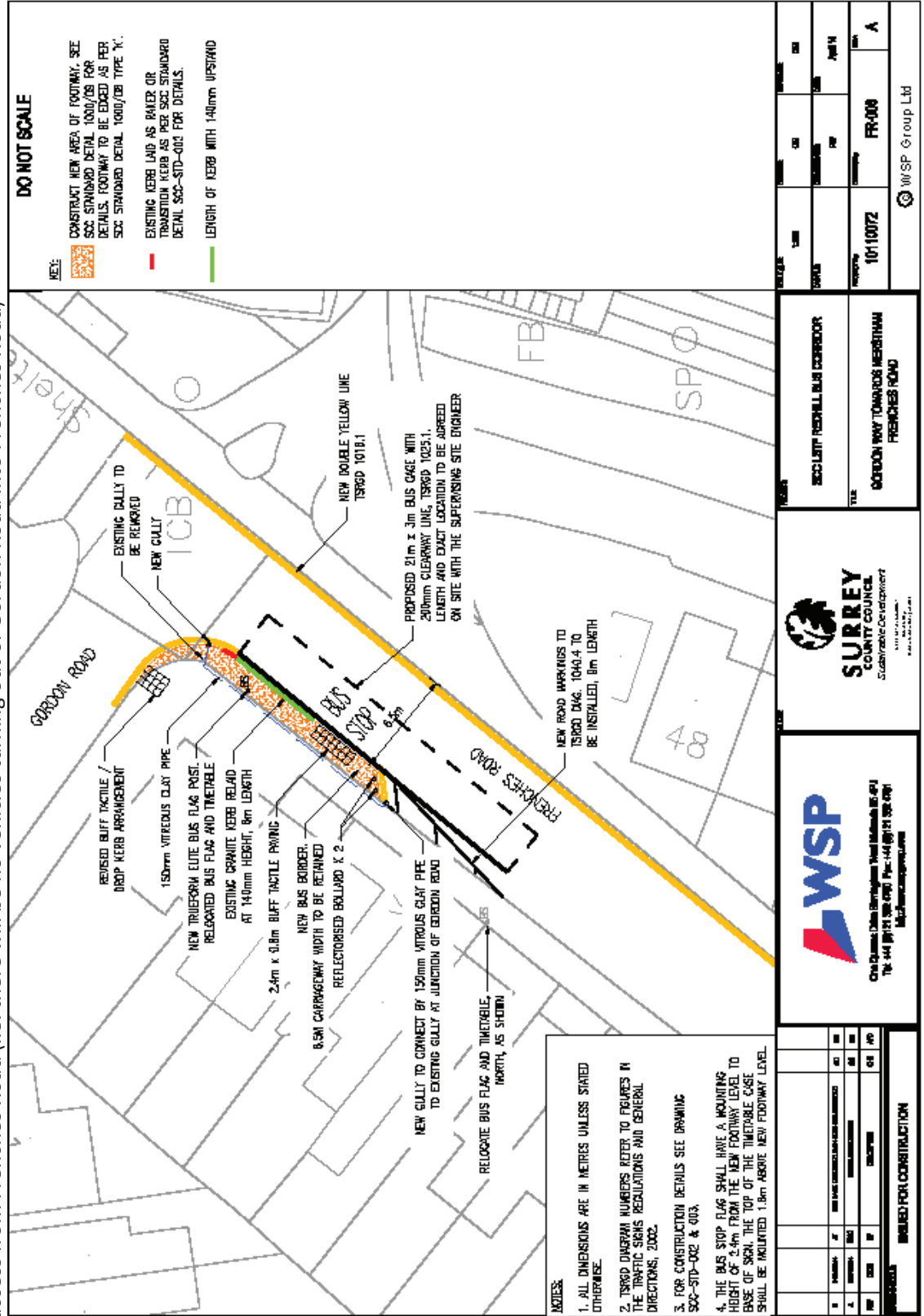




Location

Design Solution

This incorporates a small bus boarder which still allows for parking in the area but provides an area for the buses to align parallel to the kerb allowing bus passengers level access onto the bus. This will involve moving the bus stop slightly further forward towards the junction with Gordon Road, and installing the bus stop pole & flag outside the local shop. However, the bus stop pole should not cause any visibility problems, nor should encroach on the visibility of the shop window as it will be sited on the new bus boarder. This solution will provide a better bus facility for passengers as well as improving reliability for bus services by buses not having to negotiate parked cars, whilst only slightly reducing the parking in the locality. (Gordon Road is a one-way road with access from Frenches Road (i.e. there will be no vehicles turning out of Gordon Road into Frenches Road)



This page is intentionally left blank